



Where We Were Then

- ❖ 2001 moved from 2nd St location to Central Ave
- ❖ 2002 Cooler and Freezer added to officially start a Soup Kitchen
- ❖ 2003 Beautification Project Began
- ❖ Feeding 30 – 50 Persons per day at capacity
- ❖ 75% of individuals served were homeless
- ❖ Clothing on small tables outside and Clothing Closet Started outside
- ❖ Metal Carport Built and picnic tables out back
- ❖ One washer and dryer added inside
- ❖ One restroom with one shower
- ❖ A small outside garden was started in front yard
- ❖ Food Pantry was officially opened once a month
- ❖ Lockers Provided
- ❖ Accountability Started and Computers Added for job search and training

Where We Are Now

- ❖ Cooler and Freezer Floors need Replacing
- ❖ Organic Living Towers Hydro/Aeroponic
- ❖ Carport leaking and the Clothing Area had to be closed down.
- ❖ Feeding 125 – 200 Persons per day. Added outside picnic tables to accommodate.
- ❖ More families with children coming in and only about 20% of individuals we serve are actually homeless.
- ❖ Computers had to be taken down for lack of space
- ❖ Two bathrooms and showers added outside in 2005 but no longer enough
- ❖ Three Washers and Dryers
- ❖ Lockers have rain damage and rust
- ❖ Food Pantry open four days a week
- ❖ Hygiene Room Added in small closet in office

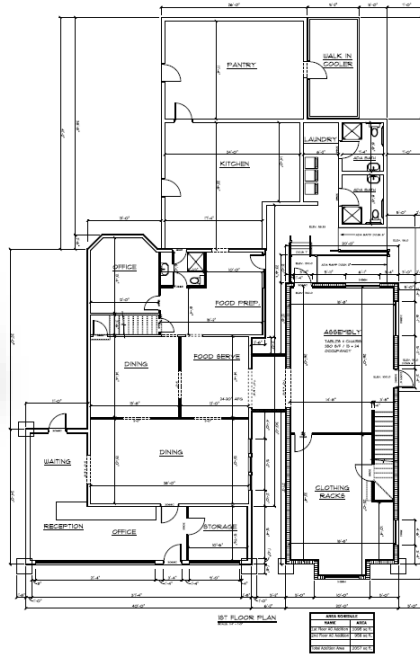


SERVE

GROW

DREAM

BUILD



Where We Are Going Next

- ❖ Need major repairs and ready to start remodeling and building.
- ❖ New Building will almost triple our dining capacity
- ❖ Multipurpose Classroom will be added to be able to offer classes throughout the day
- ❖ Barbershop with washroom so barbers and stylists no longer have to cut hair outside in the heat
- ❖ Restrooms Remodeled going from one toilet and one shower to three toilets, one shower and one dressing room and a baby changing area in both the men and women restrooms.
- ❖ Conference/Administrative/Class room added to have staff and volunteer devotions, bible studies, classes and meetings with no interruptions
- ❖ Handicap seating and Family tables added with highchairs
- ❖ More opportunities for Education, Life skills and Family Enrichment

For more information on how you can help with our project contact (863)287-6628